



AS SEEN ON TV

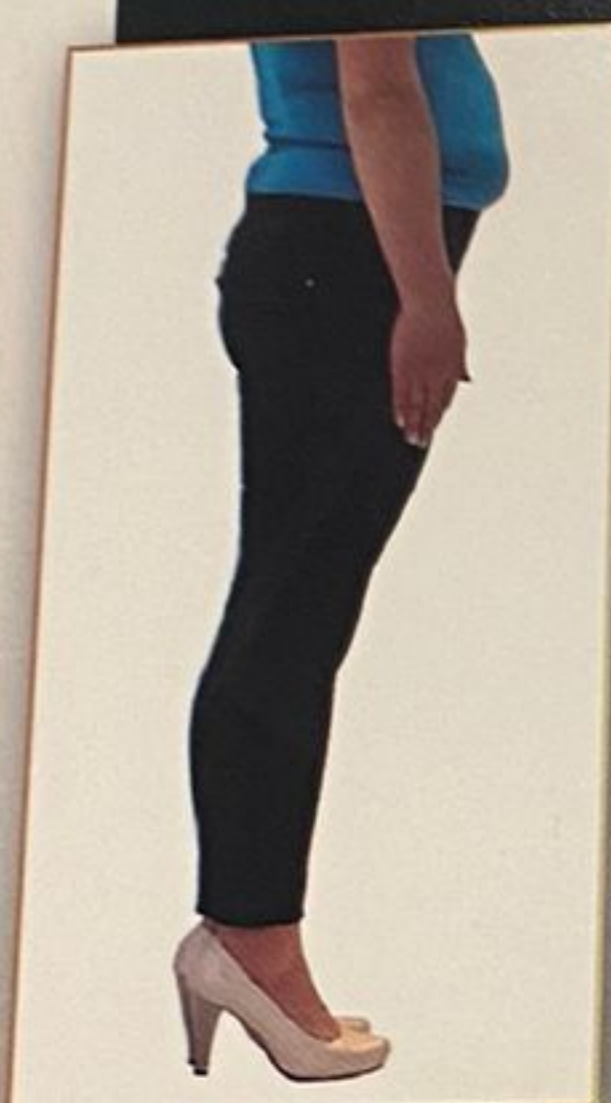
HOLLYWOOD PANTS

**NO CLASPS
NO BUTTONS
NO SEAMS**

With the latest fabric technology, hollywood pants stretch to adapt to your own shape.

**MAKES YOUR LEGS
LOOK LONGER!**

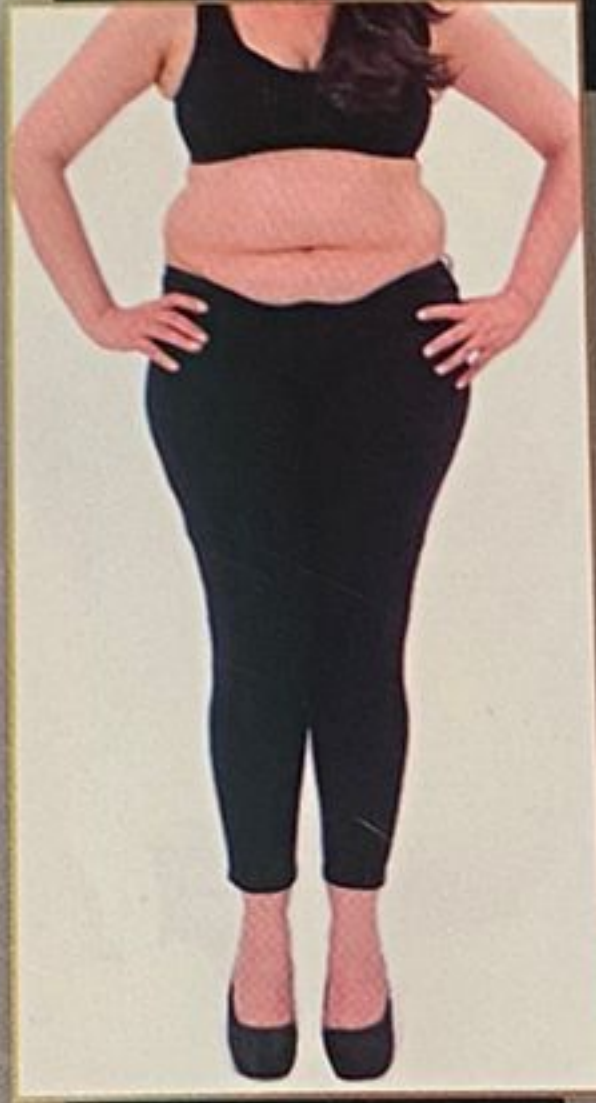
**SLIMS YOUR WAIST &
FLATTENS YOUR TUMMY!**



BEFORE



AFTER



BEFORE



AFTER

Hollywood Pants Size Chart

Size	S		M		L	
UK size	8	10	12	14	16	18
European size	36	38	40	42	44	46



everyday easier

Distributed by JML

JML, Unit 1 Eastside, Port of Tyne
South Shields, NE33 5SP

Customer Services

UK: 0800 781 7831 (Freephone)

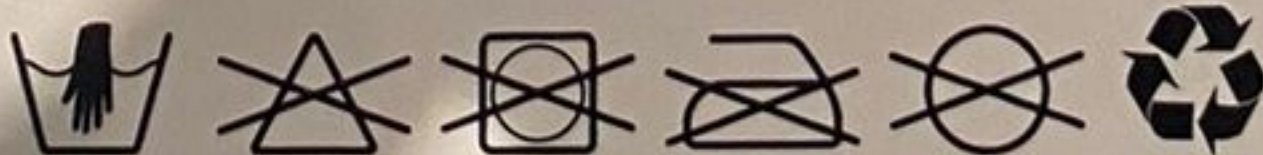
ROI: 041-978 0003 (Local rate)

Email: info@JMLgroup.co.uk

Guarantee: This product is unconditionally guaranteed for one year against all defects of workmanship and materials. This guarantee does not affect your statutory rights. If you have any problems or queries about this product please contact JML customer services.

Wash care instructions: Wash before first use. • Wash with similar colours. • Hand wash only. • DO NOT wash above 30°C. • DO NOT bleach. • DO NOT tumble dry. • DO NOT iron. • DO NOT dry clean.

Fibre composition: 97% Polyester • 3% Elastane



Product code A000602



5 057693 011573 >

Batch No. PO#P0003169-9

©JohnMillsLtd/GS/07.18/DX/C • Made in China

www.JMLdirect.com

IN-STORE | ONLINE | ON TV



AS SEEN ON TV

SIZE

HOLLYWOOD

PANTS

★ **Double-layer** waistband flattens your tummy and **slims your waist**

★ **High-waisted** design to make your legs look longer

★ **Dress them up or down** to look great and feel comfortable all day long!

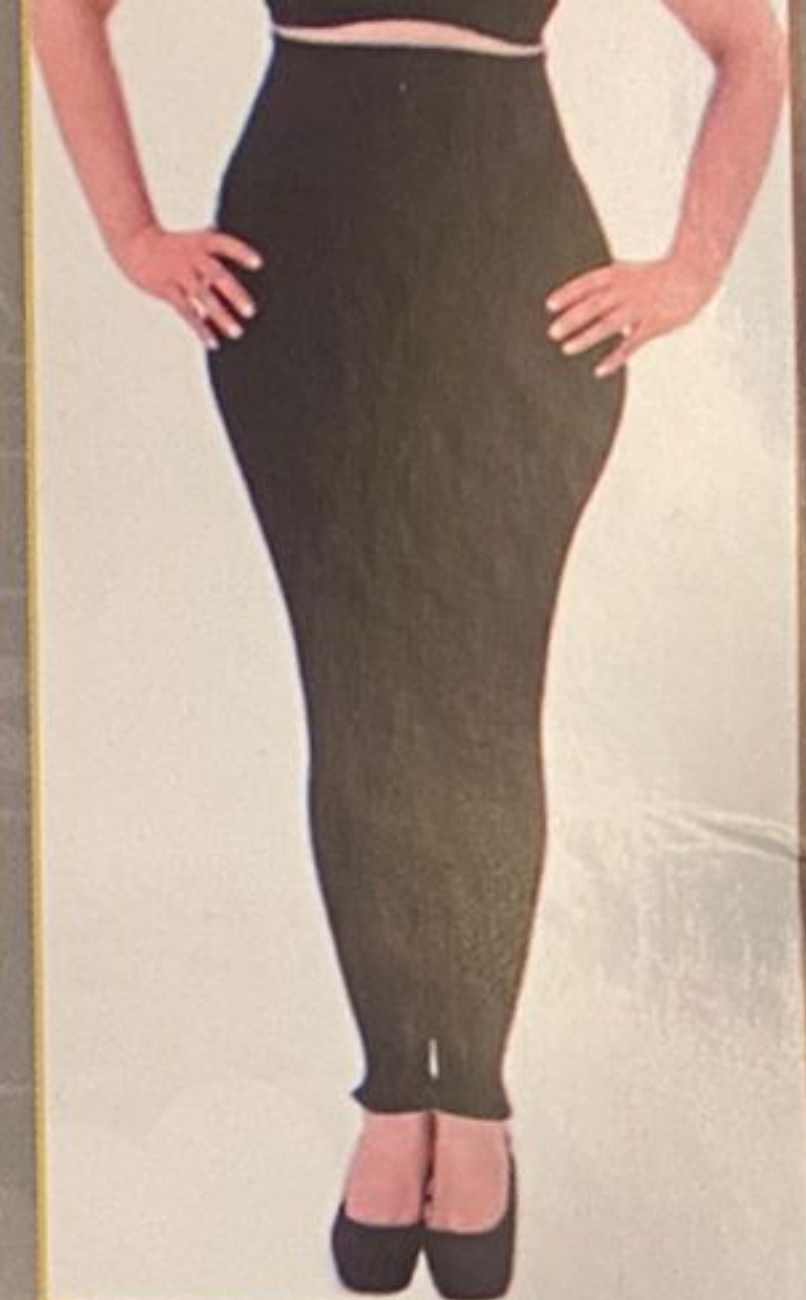
**NO CLASPS
NO BUTTONS
NO SEAMS**



SIZE

S

The **comfort** of leggings with the power of **shapewear**



BEFORE

AFTER

BEFORE

AFTER

Hollywood Pants Size Chart

Size	S		M		L	
UK size	8	10	12	14	16	18
European size	36	38	40	42	44	46

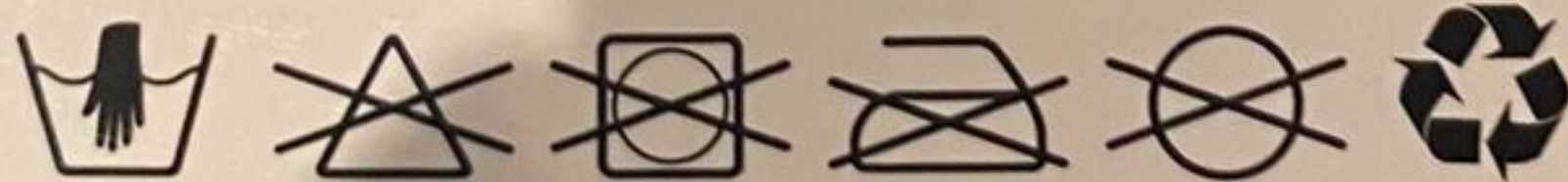


Distributed by JML
 Unit 1 Eastside, Port of Tyne
 South Shields, NE33 5SP
 Customer Services
 0800 781 7831 (Freephone)
 041-978 0003 (Local rate)
 Email: info@JMLgroup.co.uk

Guarantee: This product is unconditionally guaranteed for one year against all defects of workmanship and materials. This guarantee does not affect your statutory rights. If you have any problems or queries about this product please contact JML customer services.

Wash care instructions: Wash before first use. • Wash with similar colours. • Hand wash only. • DO NOT wash above 30°C. • DO NOT bleach. • DO NOT tumble dry. • DO NOT iron. • DO NOT dry clean.

Fibre composition: 97% Polyester • 3% Elastane



Product code A000602



5 057693 011573 >

Batch No. PO#PO003169-9

©JohnMillsLtd/GS/07.18/IDX/C • Made in China

www.JMLdirect.com

IN-STORE | ONLINE | ON TV